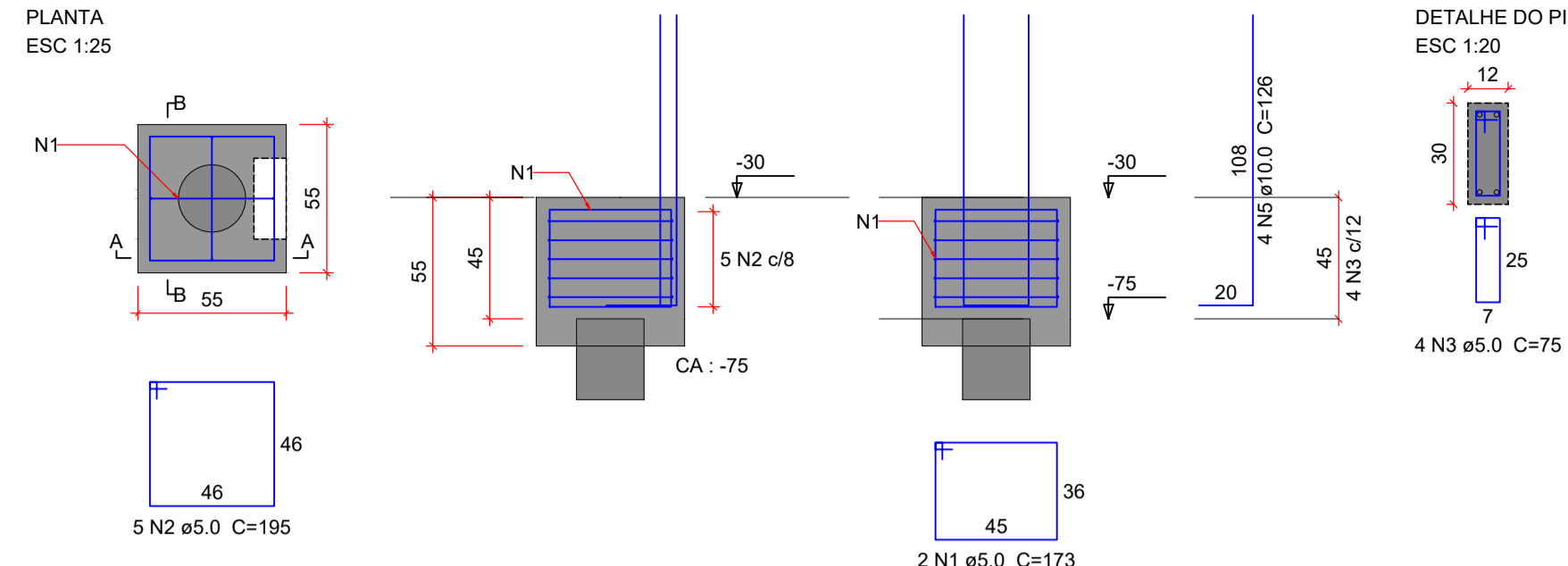
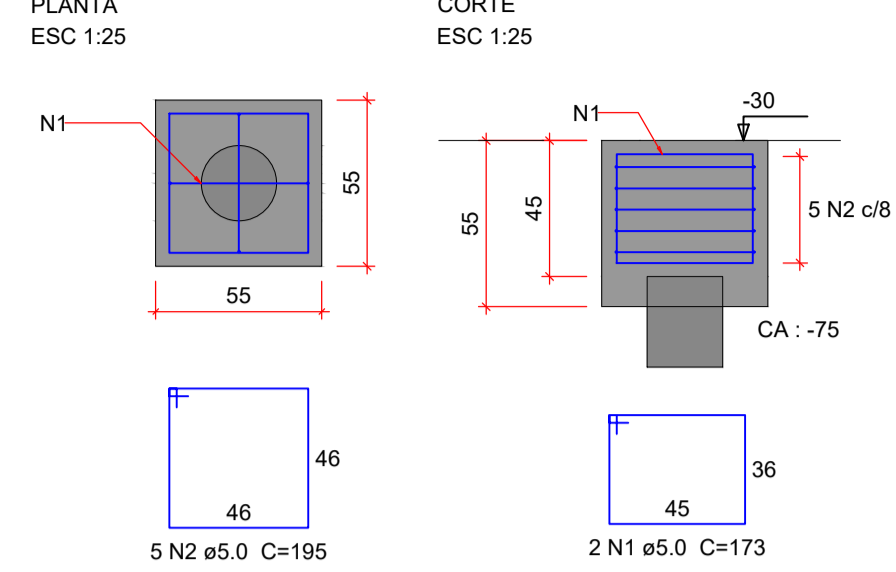


B14=B15=B23
1xC25
PLANTA
ESC 1:25



B26=B27=B28=B29=B30
1xC25 - 5
PLANTA
ESC 1:25



Relação do aço

B4 3xB14=B15=B23 5xB26=B27=B28=B29=B30

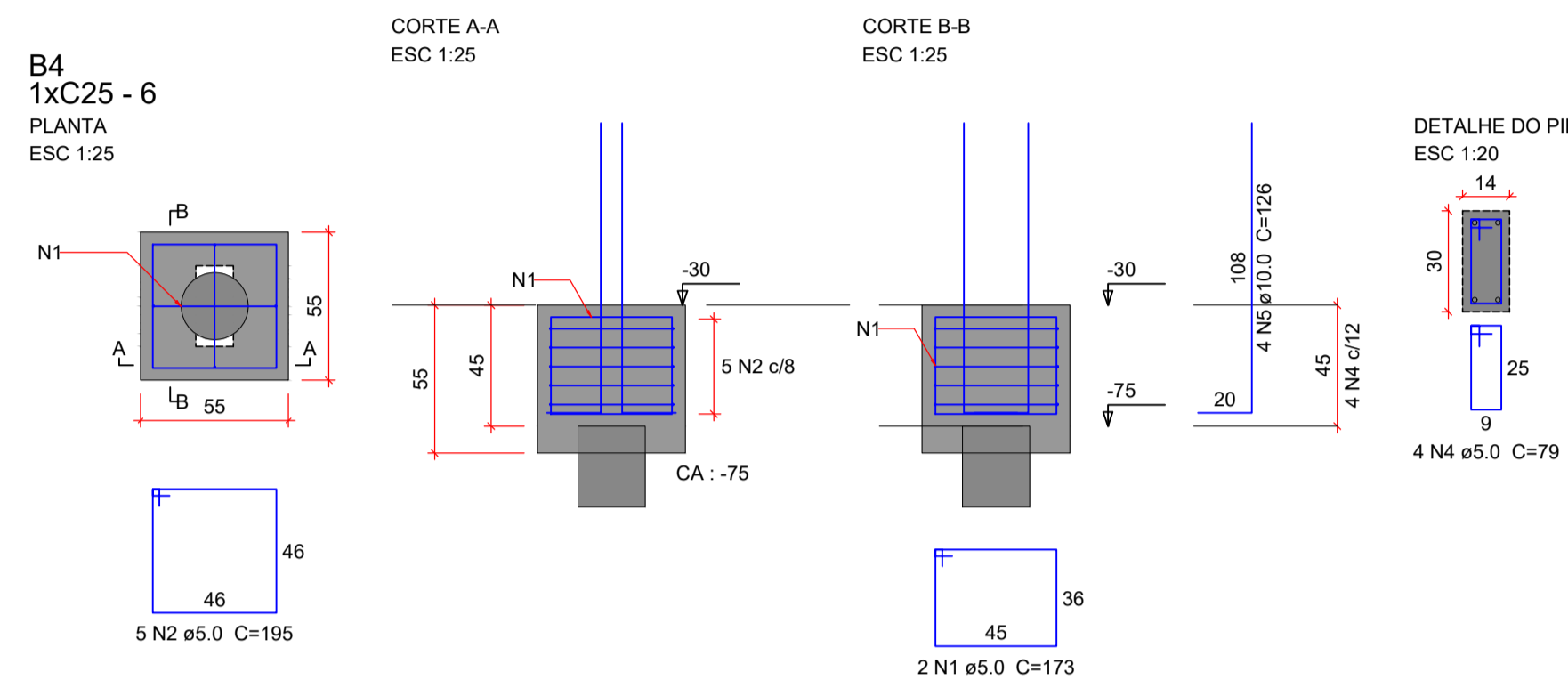
AÇO	N	DIAM (mm)	QUANT	C.UNIT (cm)	C.TOTAL (cm)
CA60	1	5.0	18	173	3114
	2	5.0	45	195	8775
	3	5.0	12	75	900
	4	5.0	4	79	316
CA50	5	10.0	16	126	2016

Resumo do aço

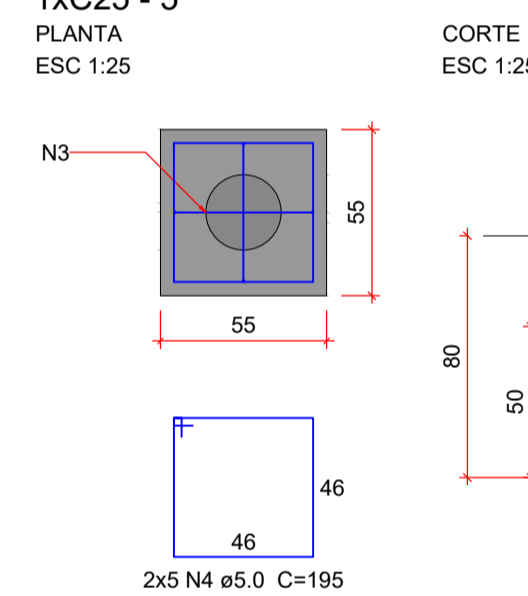
AÇO	DIAM (mm)	C.TOTAL (m)	PESO + 10 % (kg)
CA50	10.0	20.2	13.7
CA60	5.0	131.1	22.2
PESO TOTAL (kg)			
CA50			13.7
CA60			22.2

Volume de concreto (C-25) = 1.45 m³
Área de forma = 10.89 m²

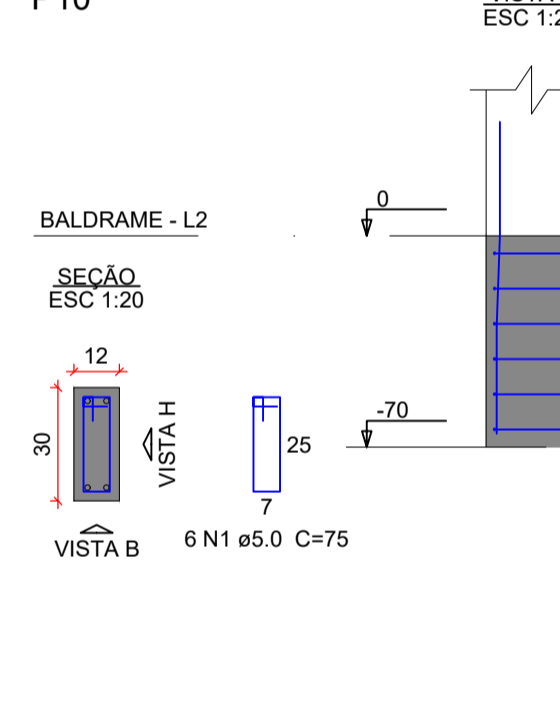
B4
1xC25 - 6
PLANTA
ESC 1:25



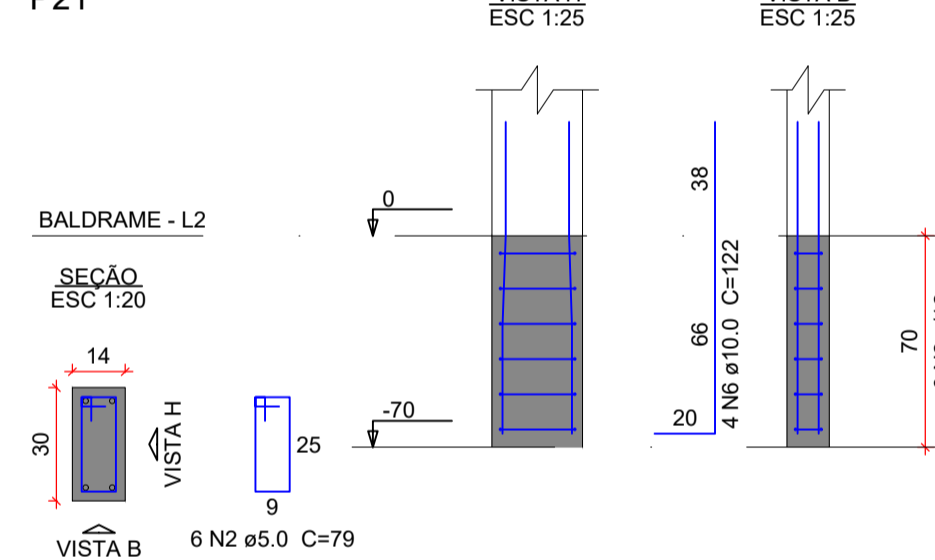
B10=B21
1xC25 - 5
PLANTA
ESC 1:25



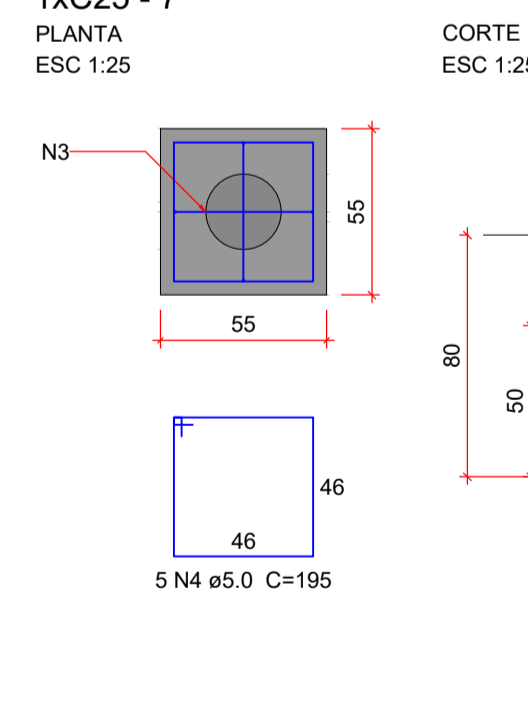
P10



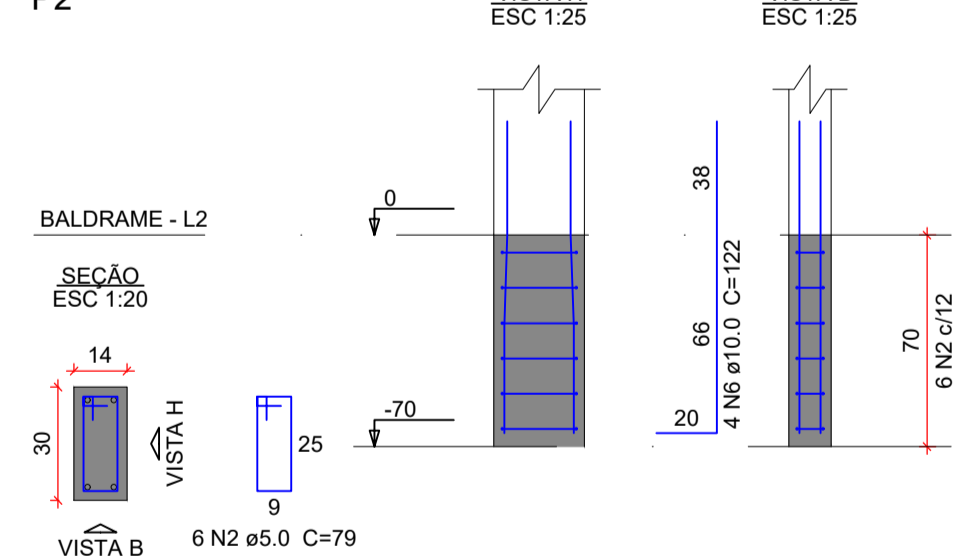
P21



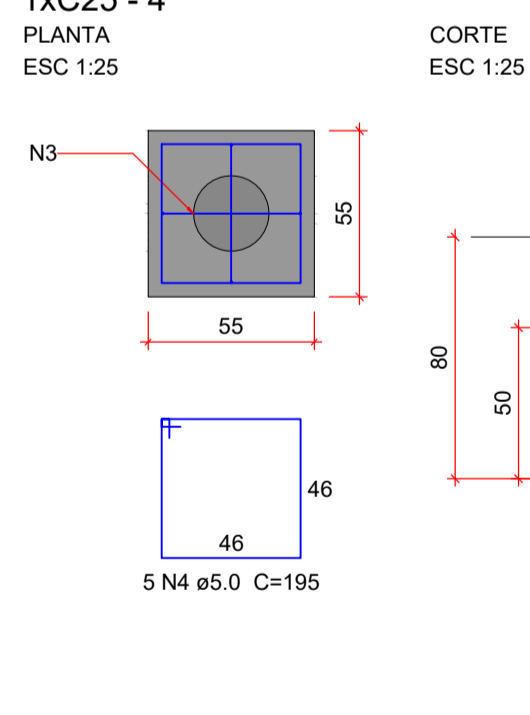
B2
1xC25 - 7
PLANTA
ESC 1:25



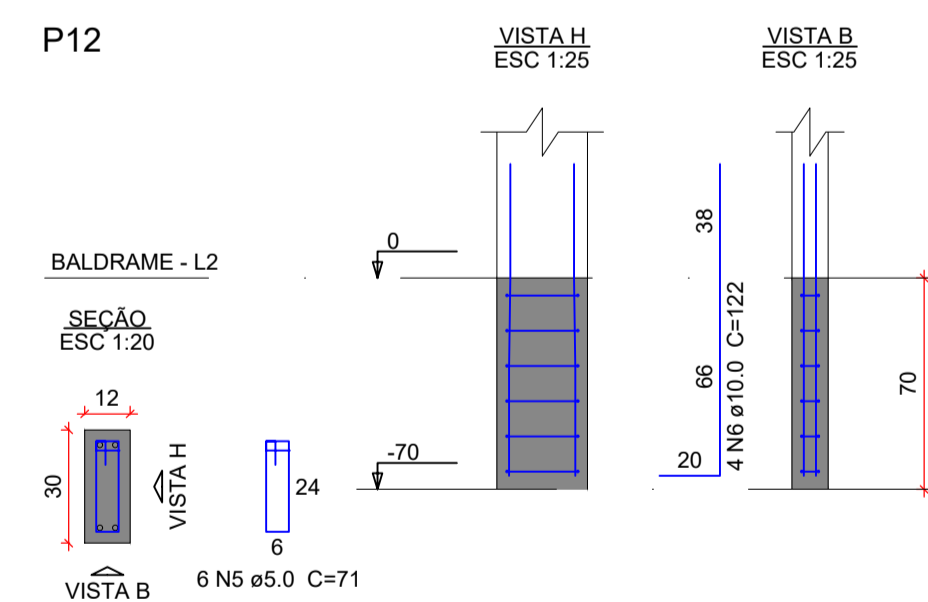
P2



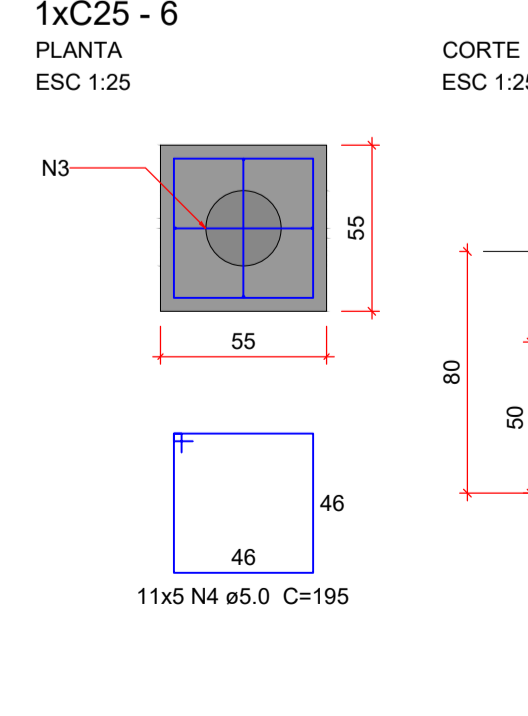
B12
1xC25 - 4
PLANTA
ESC 1:25



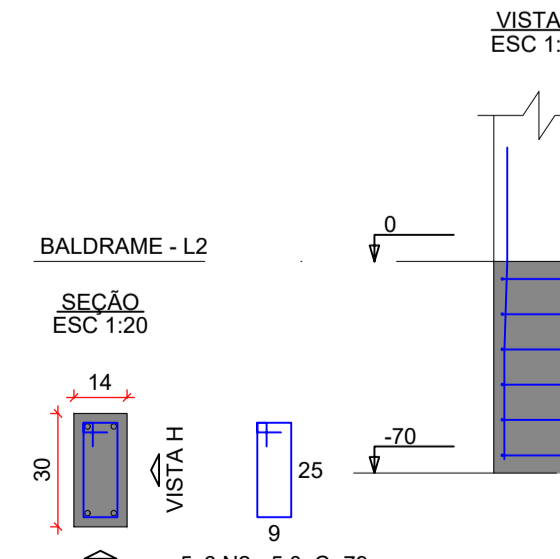
P12



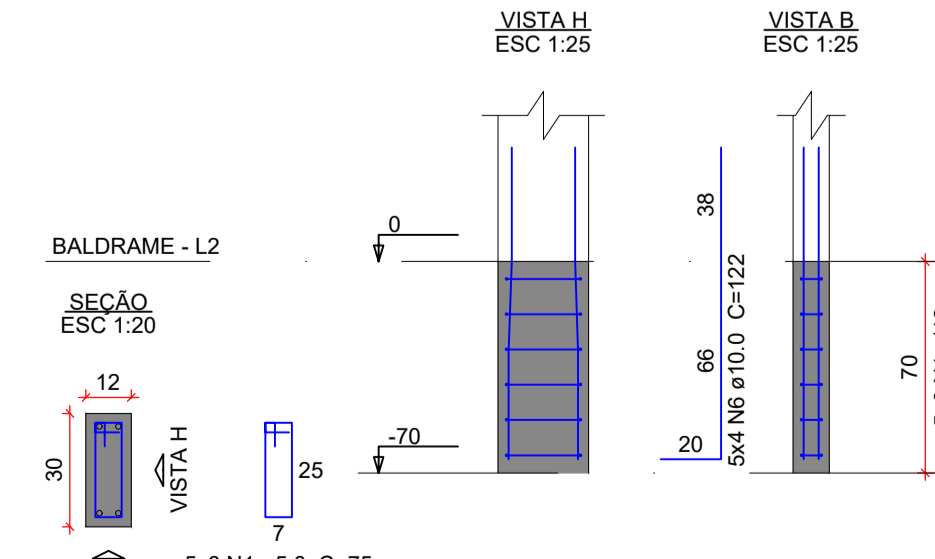
B1=B5=B6=B7=B8=B9=B18=B19=B20=B24=B25
1xC25 - 6
PLANTA
ESC 1:25



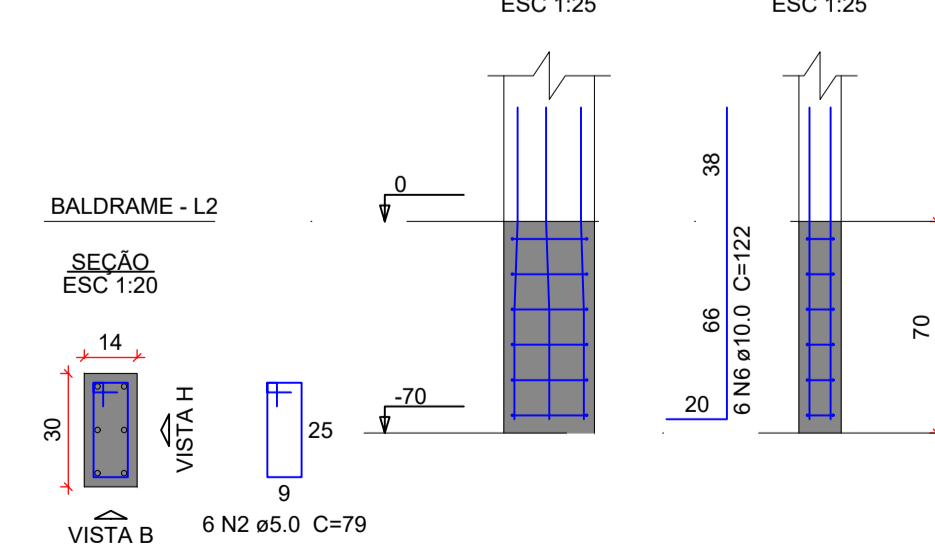
P1=P5=P6=P8=P24



P7=P18=P19=P20=P25



P9



Relação do aço

B2 B12 B21

AÇO	N	DIAM (mm)	QUANT	C.UNIT (cm)	C.TOTAL (cm)
CA60	1	5.0	36	75	2700
	2	5.0	48	79	3792
	3	5.0	30	163	4890
	4	5.0	75	195	14625
	5	5.0	6	71	426
CA50	6	10.0	62	122	7564

Resumo do aço

AÇO	DIAM (mm)	C.TOTAL (m)	PESO + 10 % (kg)
CA50	10.0	75.7	51.3
CA60	5.0	264.4	44.8
PESO TOTAL (kg)			
CA50			51.3
CA60			44.8

Volume de concreto (C-25) = 2.37 m³
Área de forma = 20.38 m²

ORGÃOS PÚBLICOS

PROJETO ESTRUTURAL

TIPO DE EMPREENDIMENTO
PÚBLICO

DATA
MAR/2026

CONTEÚDO
ARMAÇÃO BLOCOS

PRANCHA
06/10



PREFEITURA DO MUNICÍPIO DE MERCEDES
DEPARTAMENTO DE ENGENHARIA

RUA DR. OSVALDO CRUZ, 555 CEP 85998-000 MERCEDES-PR FONE: (45) 3256-8045

PROJETO: _____
ENG. CIVIL CRISTIAN COMIN
CREA: PR-2145677/D

EXECUÇÃO: _____

PROPRIETÁRIO: _____
MUNICÍPIO DE MERCEDES
CNPJ: 95.719.373/0001-23

OBRA: AMPLIAÇÃO CENTRO DIA

LOCAL: RUA PROF. SALVINO VANDERLINDE - LOTE 05 - Q 04 - LOT. POR DO SOL - MERCEDES - PR
PROPRIETÁRIO: MUNICÍPIO DE MERCEDES